

HomeFront. PROJECT

KIDS

Teach, Empower and Enjoy Your Children.

A.R.T. - Children's Needs Come First The Way Families Fit Together

Have you ever put together a jigsaw puzzle? All the pieces in a jigsaw puzzle are shaped differently, and they are meant to fit in one specific way. Sometimes it can be hard to figure out the correct way they go together, but trying to force an incorrect piece into a certain spot will not suddenly make the puzzle complete, nor will it make that the correct spot for that piece in the puzzle.



Photo Credit:
<https://upload.wikimedia.org/wikipedia/commons/thumb/f/fe/Puzzle.jpg/240px-Puzzle.jpg>

Just like jigsaw puzzles, families fit together in one certain way. However, unlike jigsaw puzzles, families are simple to figure out. The family puzzle starts with the marriage of a man and a woman. Children fit into place in the structure of the married mother and father. Children are entitled to their mother and father. This is the structure of the family. As we have previously learned, a married mother and father are the backbone and support of the family.

Some people think they are free to use assisted reproductive technologies to create families however they choose, and that there are no consequences. This thinking is incorrect. Great harm can come to children when they are intentionally separated from their biological mother and father. Just like the jigsaw puzzle pieces fit in a certain place, families are meant to go together with the married mother, father, and their biological, (or adopted), children. Changing this is like forcing a puzzle piece into the wrong place and can decrease the opportunity for optimal growth and even increase the risks for the children involved.

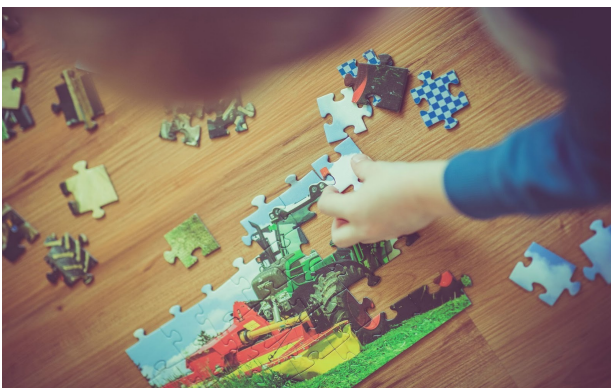


Photo Credit: https://unsplash.com/photos/AoX_1zm1NOM